



Marietta

3727 SF, 3 Bedrooms, 2.5 Baths



This popular Farmhouse Plan invites you to live the glamorous country life you've always dreamed of, with charming details such as the front porch. The exterior has plenty of windows to keep the interior lit with natural light. The two-car garage has an optional overhead bonus room. The rear porch space is perfect for summer cookouts and entertaining.

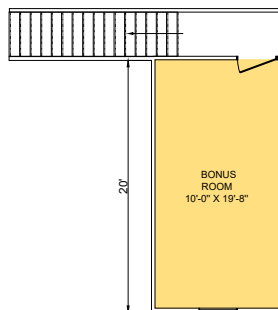
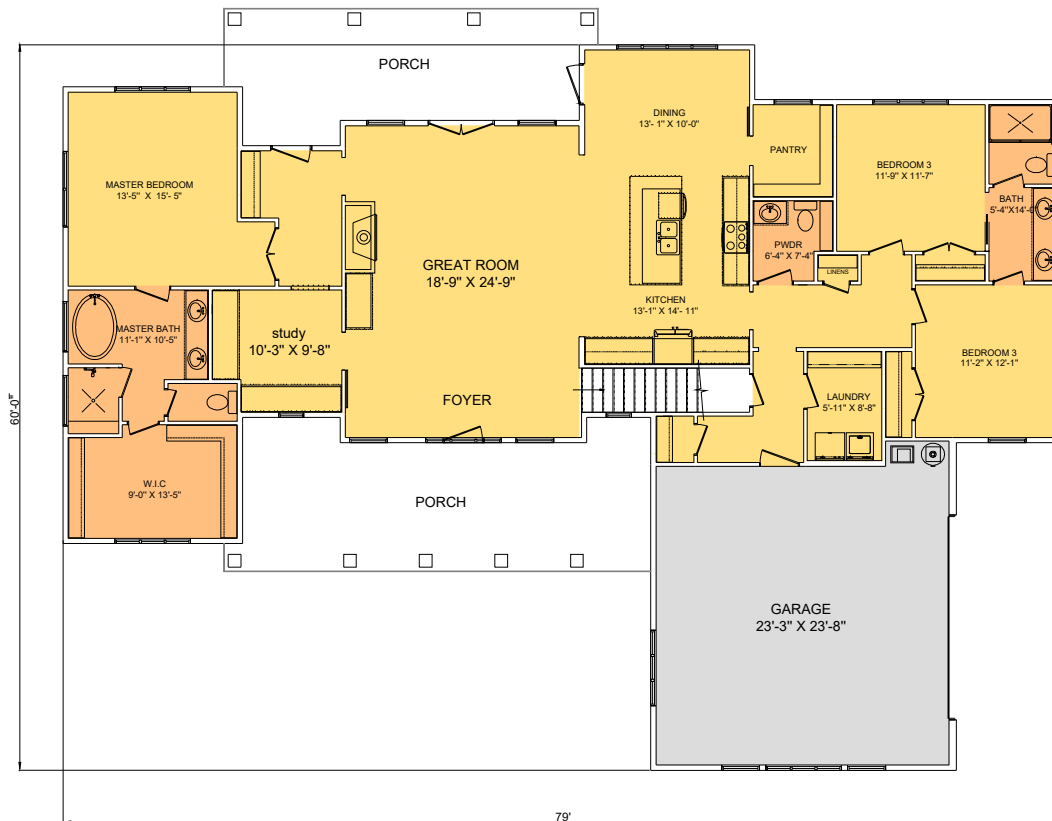
This floor plan is designed for today's modern family with three bedrooms and 2.5 bathrooms. Journeying ahead, the living room takes center stage with an optional fireplace, open views of the kitchen, access to the rear porch through french doors. An island provides seating for casual meals, while the adjoining dining room provides additional seating.

Split bedrooms grant plenty of privacy to the owner's bedroom from the secondary bedrooms offering a relaxing retreat to the homeowners. The owner's suite features free standing tub and shower, and large walk-in closet. The two bedrooms on the opposite side of the home share a full bathroom with double sinks.



Marietta

3727 SF, 3 Bedrooms, 2.5 Baths



Square Footage	
Total	3727
1st floor heated	2268
2nd floor heated	255
Porches	628
Garage	576

All drawings are conceptual renderings, home dimensions may vary and show options not included in base price.