



The Covington

2589 sq ft 3 bedrooms, 2 baths and 2 car garage.



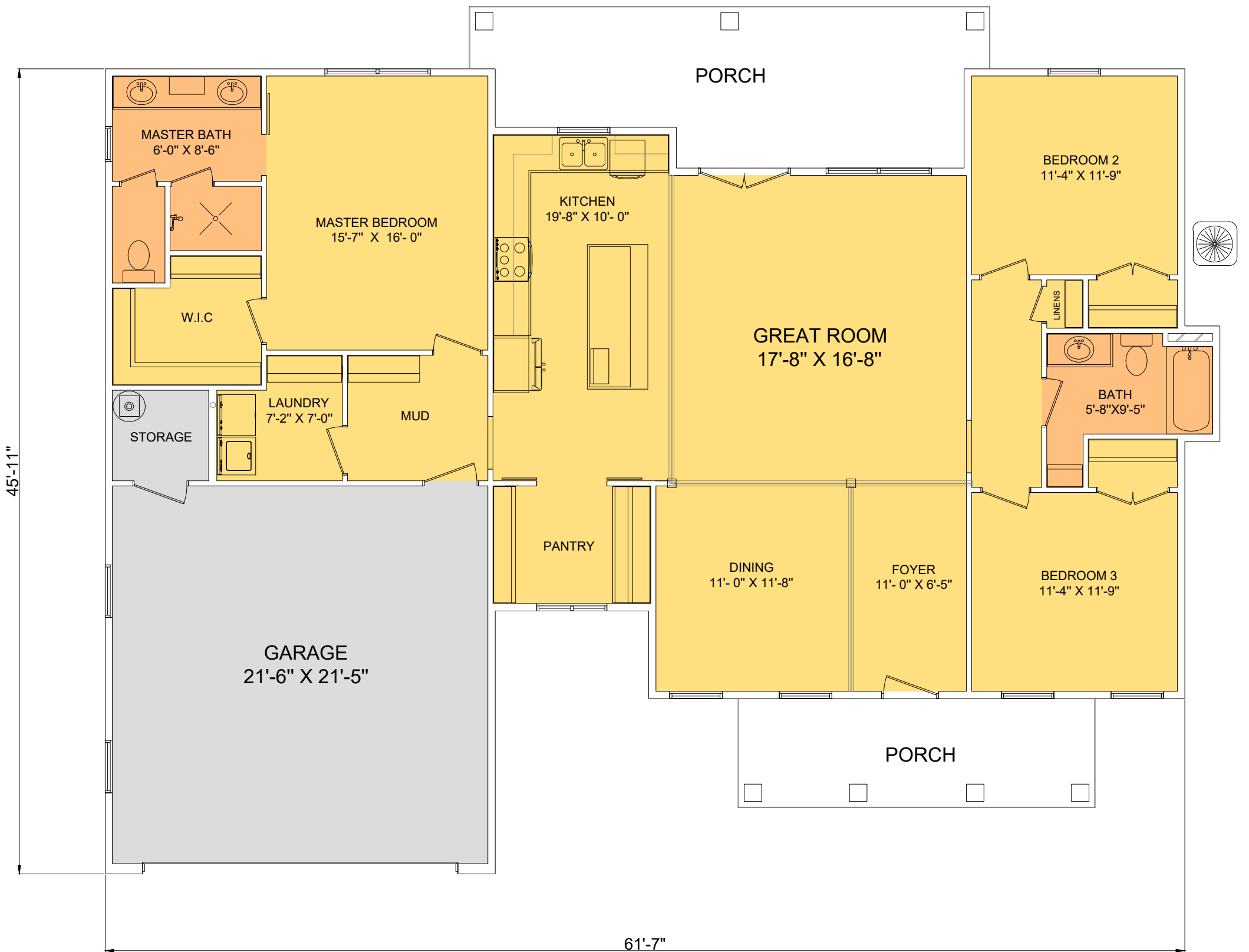
This one-story farmhouse measures approximately 1733 square feet with three bedrooms and two bathrooms. The exterior showcases a board and batten siding with plenty windows and column pillars outlining the front and rear porch. The front porch details a 9-foot ceiling height to create an inviting first impression to the home. The rear covered porch creates a welcoming covered space for entertaining friends, relaxing under the warming sun, or watching the kids play outside. Rounding off the exterior is the front-entry garage. This two-car garage details a storage closet, attic access, and window views to brighten the room.

The front entry leads to the 9-foot-high foyer which immediately opens to the dining room which then reveals the open floor concept. The dining room measures sufficient space for hosting family dinners during special occasions as well as nightly meals with the family. The great room serves as the central location of the home where the family can gather around to watch TV, play games, or just enjoy one another's company. The great room draws natural light from the rear wall and door accessing the rear porch. This large kitchen space highlights the island with an eating bar and a walk-in pantry hidden behind barn doors. Split bedrooms offer excellent privacy for the homeowner. The owner's suite delivers custom shower, and a large walk-in closet. The two secondary bedrooms are equally sized and share a hall bathroom.



The Covington

2589 sq ft 3 bedrooms, 2 baths and 2 car garage.



Square Footage	
Total	2589
Heated Area	1733
Porches	346
Garage	478

All drawings are conceptual renderings, home dimensions may vary and show options not included in base price.